

# Heart SRF Stem Regen Factors

Your heart works harder than any other muscle in your body. Your life depends on it pumping without a break. In fact, over the course of your lifetime your heart will contract an estimated 3 billion times as it pumps your blood 100,000 miles through blood vessels each day! **Heart SRF** provides in one comprehensive product the support this complex system needs.

The Cardiovascular System is very complex and works closely with other systems of the body. It delivers thru a vast system of veins and arteries, nutrients and oxygen to all the cells in the body and at the same time it helps dispose of metabolic waste throughout the entire body with the support of the respiratory system. Proper support for this complex system would normally require numerous products.

**Now with one very comprehensive product, Heart SRF, you will be able to provide superior support for the Heart and the entire Cardiovascular System**, from the endothelial glycocalyx (gel substance) in the lining of the arteries, ATP production deep within the mitochondria of the heart, emotional healing, detoxification & drainage and everything in between as outlined below.

**Heart SRF** helps support a healthy cardiovascular system and the many key risk factors. When we support the health of the whole cardiovascular system we support the total body because of its far reaching effects throughout the entire system. **Heart SRF** will provide support at many levels from acute, to chronic and even as an excellent maintenance program.

## Heart SRF Benefits At A Glance

- Powerful Cardiogenic with Support for Healthy Heart Function and Coronary Artery Health
- Superior Ingredients backed by dozens of peer reviewed medical studies
- Support for Healthy Heart Muscle Contractions
- Support for Healthy Cholesterol Levels
- Support for Damaging Oxidative Molecules
- Support for the Critical Endothelial Layer in Coronary Arteries
- Support for the Stabilization of Endothelial Plaques
- Supports the Endothelial Glycocalyx & Healthy Arterial Blood Flow
- Support for the Reduction of Arterial Oxidative Stress
- Promotes Cellular Energy Production (ATP) in the Heart
- Superior Cardiovascular and Antioxidant Support
- Promotes a Healthy Inflammatory Response
- Support for Healthy Levels of LDL & Oxidative Stress
- Promotes Healthy Circulation
- Promotes Physical Stamina and Endurance
- Support for a Healthy Stress Response and Emotional Balance
- Support for the Health of the Entire Cardiovascular System
- More Natural Antioxidant Protection than Green Tea, Red Wine or Blueberries.
- A Great Overall Cardio-Protective Maintenance Program

## The Heart Is More Than Just a Pump - The Emotional Role of the Heart

There is much study around the heart and the role it plays with the brain and the rest of the body, especially with our emotional body. **Heart SRF** contains flower essences, frequencies, herbals and Laser Infused Bio-Information. We are emotional beings and we cannot separate the emotional body from the physical body, they are very much intertwined. For more information visit [www.heartmath.com](http://www.heartmath.com)

**Use SRF's® with Medix Stem Cell Activators For A Powerhouse Combination** The **Stem Regen Factors®** line of products are designed to be used with the **Medix Stem Cell Activation** products that activate your own adult stem cells to turn on the natural repair process. The SRF product, assist the body to increase stem cell production, provide multi-faceted support and micronized nutrition for the organ or system including deep cellular detoxification and drainage, emotional support and Laser infused bio-information. The SRF products can be used as a stand alone or in combination with the Medix Stem Cell Activators. **These two lines combined together are a powerhouse that cannot be found anywhere else.** Use companion Stem Cell Activator **HRT Medix - HEART** for ultimate results.

\*These statements have not been evaluated by the Food and Drug Administration.  
This product is not intended to diagnose, treat, cure, or prevent any disease.



## **SUPPORT FOR: \***

- ✓ Healthy Heart Function
- ✓ Artery Health
- ✓ Elevated Inflammatory Markers
- ✓ Fatigue & Low Energy
- ✓ Arterial Plaque
- ✓ Deep Emotional Scars
- ✓ Low Cellular Energy (ATP)
- ✓ Blood Pressure Imbalances
- ✓ Shortness of Breath
- ✓ Swollen Legs, Ankles &/or Abdomen
- ✓ Rapid Heartbeat
- ✓ Chest Pain
- ✓ Loss of Appetite Due to Heart Function
- ✓ Abnormal Heart Rhythm
- ✓ Heart Palpitations
- ✓ Cholesterol



**BODY**  
REDESIGNING  
by Joseph Christiano®

**ORDER TODAY**  
**800-259-2639**

[www.BodyRedesigning.com](http://www.BodyRedesigning.com)

# The SRF Difference

There are numerous supplements on the market today. So why choose the **Stem Regen Factors®** product line of micronized nutraceuticals?

## THE ONLY HEART SUPPORT WITH:

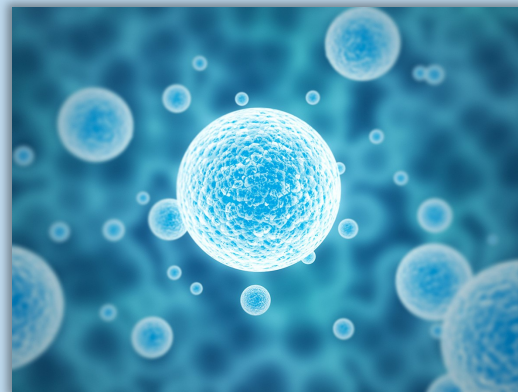
- ✓ **Stem Regen Factors®** - an exclusive blend of clinically tested, micronized ingredients that help promote the production and release millions of your body's own stem cells from the bone marrow into the bloodstream. Studies show that the more stem cells you have circulating in your body, the greater the ability of your body to naturally renew itself.
- ✓ **Micronized Ingredients** - Smaller is better! Cutting-edge micronization technology produces tiny particle-sized, ingredients allowing for Superior Absorption, bypassing the Gastrointestinal Tract, Improved Bioavailability and Faster On-Set of Action. This means there are no pills to swallow, easy-to-use spray, safe and convenient, with rapid bioavailability, and quick results.
- ✓ **Complete Micronized Nutrient Support** - A full range of supportive nutrients include vitamins, minerals, herbs, cell salts, amino acids, and nutraceuticals to support the organ or system for optimal health and restoration. *Stem Regen Factors* is uniquely formulated to encompass the science behind Traditional Chinese Medicine, Ayurvedic and Western Medicine for optimal nutritional support.
- ✓ **Detox Support** - Deep cellular detoxification with lymphatic and organ drainage is a fundamental component of cell health and renewal. Without detoxification, cell waste will buildup not allowing the nutrients to be utilized by the cells properly. This could be the root of many diseases.
- ✓ **Emotional Support** - For optimal health, the mind-body connection must be addressed. Cells need constant growth to maintain the body's healthy functioning. However, when confronted by stress, cells adopt a defensive protection posture. When that happens, the body's energy resources, normally used to sustain growth and healing, are diverted to systems that provide protection. The result is that growth and healing processes are restricted or suspended in a stressed system. The Emotional Support in **Heart SRF** restores the body to a state of calm and counter balance and allows the cells to relax, grow and repair.
- ✓ **Laser Infused Bio-Information** - Includes frequency based information to provide support to targeted organ or system making this Product Line an even more unique product for superior results. Included are gene targeted bio resonant frequencies of DNA molecules with precise sequences to target genes that produce the body's natural proteins that have been proven to promote health, as well, as protect against and supports the resolution of many diseases.

**Directions:** Take 5 sprays under your tongue 2 x day. Can take as needed up to 6 times a day. Teen (13-19) 3 sprays 2 x day; child (3-12) 2 sprays 2 x day.

**Ingredients:** Stem Regen Factors® (Stem Cell Release, Mobilization & Differentiation Support) Undaria Pinnatifida (Fucoidan), Aloe Macrocyclada, Vitamin D-3, Huperzine A, Fullerenes-C60, Curcumin, Shilajit, Laser Infused Bio-information. Nutritional Support: Rhamnan Sulphate (Monostroma nitidum extract), Oligomeric proanthocyanidins (OPCs) [from standardized hawthorn extract (leaf, flower, stem)], Centellicum® gotu kola extract (leaf) [std. to 35% triterpenes], Pycnogenol® dried French Maritime pine extract (bark) [std. to 65% procyanidins], PQQ (Pyrroloquinoline Quinone), Capros® amla water extract (fruit) [std. to 60% low molecular weight hydrolyzable tannins], Black tea extract (leaf) [std. to 25% theaflavins], Alpha GPC (Alpha-glycerophosphocholine), EGCG (Epigallocatechin gallate), Betel Nut Leaf (Piper Betle), Black Cohosh (Cimicifuga racemose), Angstrom Minerals Complex (Magnesium, Potassium, Zinc, Gold, Silver), Cissus quadrangularis, Clove (Eugenia caryophyllata), Cistanche tubulosa, D-ribose, Cordyceps (Cordyceps militaris), Dong Quai (Angelica Sinensis), Full Spectrum Vitamins Complex, Goat's Rue (Galega officinalis), Guayusa Foliage (Ilex Guayusa), Guduchi (Tinospora cordifolia), Nano Curcumin, L- Alanine, L-Arginine, L-Glutamine, Lion's Mane (Hericium erinaceus), L-Leucine, L-Methionine, L-Ornithine, L-Proline, Myo-Inositol, Pantethine, Pantothenic Acid, Policosanol, Red Yeast Rice Extract, Rehmannia Root, Reishi (Ganoderma lucidum), Rejuna™ arjuna 10:1 extract (bark) [std. to 40% polyphenols], Silica Extract (Horsetail plant), Syrian Rue (Peganum Harmala), Ubiquinone (CoQ10), Vinpocetine, Vitamin C, Vitamin D3 (as Vegan Cholecalciferol, from Lichen), Vitamin K2 (as MK-4 (Menatetrenone) and MK-7 (MenaQ7® as Menaquinone-7), Vitamin-B Complex, Xanthohumol, Bio-information. Other Ingredients: Purified Spring Water, Kosher Vegetable Glycerin, Citric Acid (Our Citric Acid is derived from 100% pure anhydrous citric acid from sugar cane, Non GMO, USP grade), Potassium Sorbate, 5% Organic Cane Alcohol. Non GMO Warning: If pregnant, breastfeeding, taking any medications, or have a medical condition please consult your doctor before use. Keep away from children. Use only if safety seal is intact.

**Be Aware:** When people are used to taking drugs to control their blood pressure and/or cholesterol levels, they need to monitor these levels closely as they may drop significantly using this product. Have them work with their doctor to reduce their drugs accordingly.

\*These statements have not been evaluated by the Food and Drug Administration. This product is not intended to diagnose, treat, cure, or prevent any disease.



## SRF Complete Product Line

- ✓ Adrenal \*\*
- ✓ Blood \*\*
- ✓ Blood Sugar Balance
- ✓ Bone
- ✓ Brain
- ✓ Digest
- ✓ Female \*\*
- ✓ Heart
- ✓ Immune \*\*
- ✓ Intestine
- ✓ Joint
- ✓ Kidney Bladder
- ✓ Liver Gallbladder
- ✓ Lung
- ✓ Male \*\*
- ✓ Nervous System
- ✓ Pineal \*\*
- ✓ Thyroid \*\*

\*\* Coming Soon



**ORDER TODAY**  
**800-259-2639**

[www.BodyRedesigning.com](http://www.BodyRedesigning.com)